

\$3.5 Million Saved with **FILTERMAG**[®]

Hydraulic Power Unit



Faster repairs mean less downtime.

When a hydraulic pump fails, the downstream debris can wreak havoc with your system. FilterMags installed on your high pressure filters can capture most of the damaging debris too small for your filters to stop. This can significantly reduce the amount of time and labor required to get up and running again.

Customers with large critical path hydraulics have reported **savings in excess of \$3 million** as a result of FilterMag.

Proven Results

- **\$3.5 Million Saved in Repair and Downtime**
- **90% Reduction in Particle Contamination**

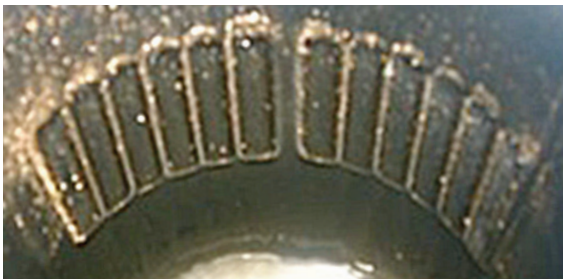
Case Study Details—Leach Pad Stacker

Four FilterMag CT4.9s were installed on each of the four high-pressure filters positioned immediately after the pump. The single return filter received four additional CT4.9s.

Three weeks after installation, a pump failure generated a storm of particles from the Nibral (nickel bronze aluminum alloy) impeller. Nickel is highly susceptible to magnetism, so **FilterMag caught 69 million particles** that would have passed through the 10 µm filters contaminating the hydraulic piping system and degrading the process equipment.

Historically, this type of failure would require 4–10 days of downtime to repair. Cleaning out the hydraulic piping (pigging the lines) was a substantial part of the repair process. Because FilterMag captured virtually all of the impeller debris, the lines only required a flush. The pump, filters, and fluid were replaced and the Leach Pad Stacker was back to work in less than two days.

The mining company estimated they saved a minimum of \$3.5 million, thanks to FilterMag.



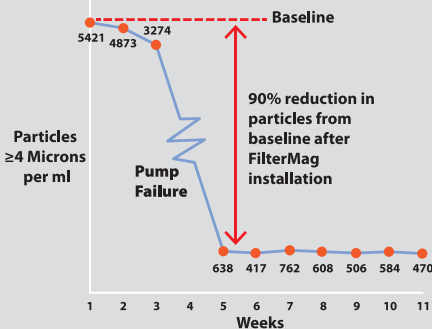
Cut open high pressure hydraulic filter showing tens of millions of particles captured during a hydraulic pump failure. Most particles are smaller than 10µm.

092115

FILTERMAG[®]

INDUSTRIAL PRODUCTS DIVISION

90% Reduction in Particle Contamination with FilterMag.

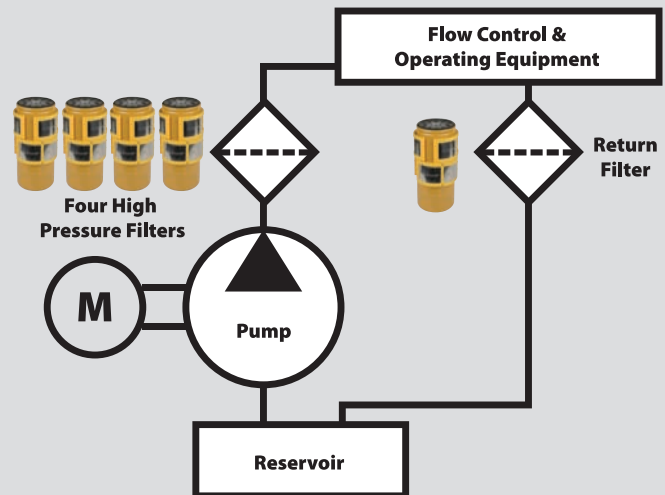


- \$3.5 million savings from greatly reduced time to repair and elimination of 3 to 5 days of lost production.

- 70% projected increase in system longevity by the reduction in contamination.*

*Projection by NORIA Life Extension Chart for hydraulics.

FilterMag placement on high pressure and return filters



FilterMag International, Inc.

1-800-FilterMag • FilterMag.com • Sales@FilterMag.com

Reduce Wear • Mitigate Damage • Increase Reliability • Extend Equipment Life

Spin-on Filters USE **CT**



Applications:

- Gas and Diesel Engines • Rotating Equipment
- Hydraulic Systems • Diesel Fuel Filtration
- For most spin-on filter applications

Order part # based on oil filter diameter

Pairs		Fits Spin-on Filter Diameters		Dimensions			
Part #	Qty.	Minimum	Maximum	Height	Thickness	Arc (Max)	Weight
CT3.2PR	2-ea.	2.9 in (74 mm)	3.5 in (89 mm)	2.65 in (67 mm)	.34 in (8.6 mm)	360°	18 oz (.52 kg)
CT3.8PR	2-ea.	3.6 in (91 mm)	4.4 in (112 mm)	2.65 in (67 mm)	.35 in (8.9 mm)	360°	28 oz (.80 kg)
CT4.9PR	2-ea.	4.5 in (114 mm)	5.5 in (140 mm)	2.95 in (75 mm)	.36 in (9.1 mm)	360°	38 oz (1.08 kg)

Cartridge Filters USE **XT**



Applications:

- Rotating Equipment • Hydraulic Systems
- Gas & Diesel Engines • For most cartridge filters

Order part # based on outside diameter of filter housing

Pairs		Fits Outside Housing Diameters		Dimensions			
Part#	Qty.	Minimum	Maximum	Height: Faceplate/Endcap	Thickness: Faceplate/Endcap	Arc (Max)	Weight
XT4PR	2-ea.	3.8 in (96 mm)	4.8 in (122 mm)	2.7" (68mm)/3.24" (82mm)	.9"(23mm)/1.4" (36mm)	330°	7.0 lb (3.2 kg)
XT5PR	2-ea.	4.8 in (122 mm)	5.8 in (147 mm)	2.7" (68mm)/3.24" (82mm)	.9"(23mm)/1.4" (36mm)	340°	9.0 lb (4.1 kg)
XT6PR	2-ea.	5.8 in (147 mm)	6.8 in (173 mm)	2.7" (68mm)/3.24" (82mm)	.9"(23mm)/1.4" (36mm)	344°	11.0 lb (5.0 kg)
XT7PR	2-ea.	6.8 in (173 mm)	7.8 in (198 mm)	2.7" (68mm)/3.24" (82mm)	.9"(23mm)/1.4" (36mm)	348°	13.0 lb (5.9 kg)
XT8PR	2-ea.	7.8 in (198 mm)	8.8 in (224 mm)	2.7" (68mm)/3.24" (82mm)	.9"(23mm)/1.4" (36mm)	350°	15.0 lb. (6.8 kg)

Easy CT Installation: SNAP ON, SLIDE OFF, REUSE



1. Install two or more FilterMags on each spin-on filter opposite each other near the threaded end.
2. Reuse FilterMags by sliding them off the old filter and snapping them on a new one when the filter is changed.

FILTERMAG[®]
INDUSTRIAL PRODUCTS DIVISION

FilterMag International, Inc.

7440 East Karen Dr. • Scottsdale, AZ 85260

480-991-9939 • 480-991-9949 Fax

1-800-FilterMag (1-800-345-8376)

FilterMag.com • Sales@FilterMag.com



© 2015 FilterMag International, Inc.

Reduce Wear • Mitigate Damage • Increase Reliability • Extend Equipment Life